

Shalom ESX: risk security software for energy and industrial service providers

### INTRO

The international energy space is one of the crucial foundations of the global economy. Modern technologies require some form of generated and transmitted electrical energy for powering equipment, communications, transportation and supply chain management, manufacturing, chemicals refinement and processing, and interconnected computers, impacting virtually every strata of society.

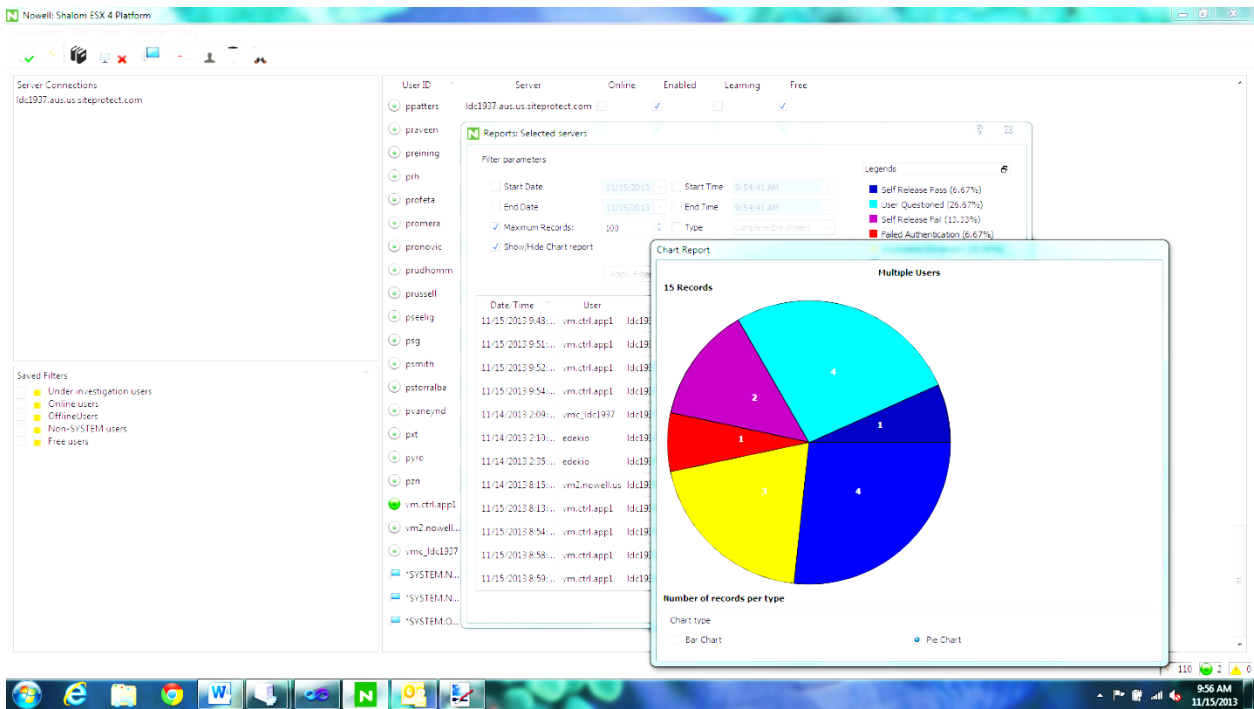
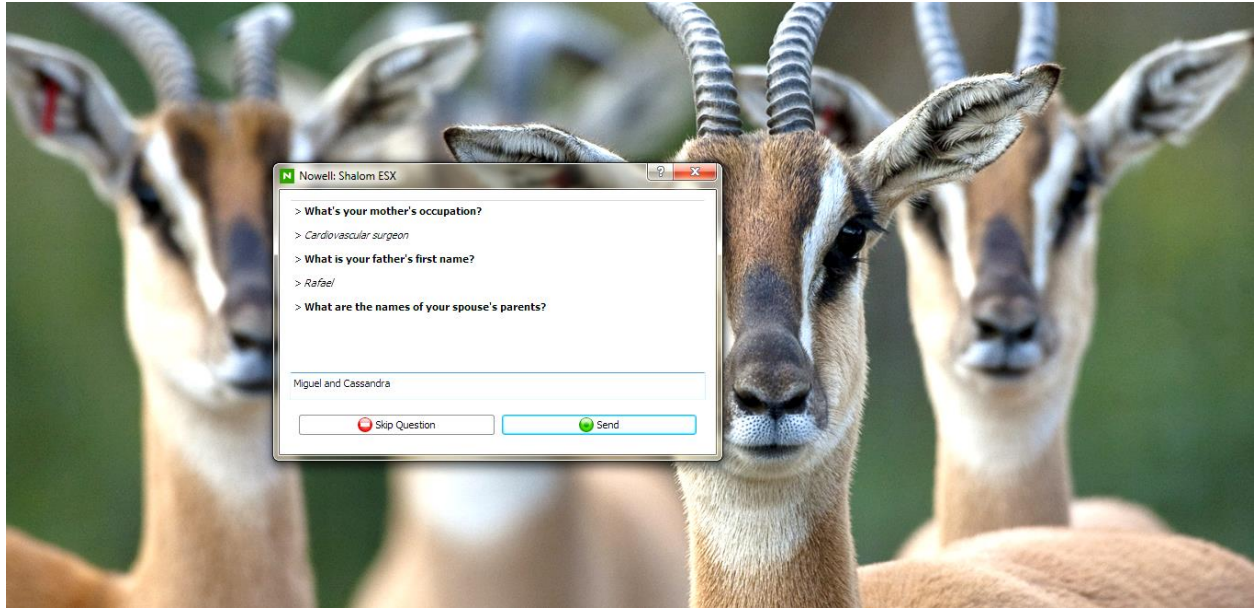
With the increasing world population, the demand for energy sources to support and sustain the growing population is growing. Energy players are becoming one of the more important roles in guaranteeing the successful development of the global economy. These energy companies all rely

on interconnected information technology systems to intelligently extract, process, provision, distribute, transmit and accurately measure and manage different forms of energy to grid operators and consumers in various forms.

Several information technology systems and advanced software systems on the network are responsible for global energy extraction, management and distribution. Information technology is now at the heart of the energy industry. Assuring that the right information is gathered, used and processed for energy-based operations in a highly secure and trust-worthy manner is absolutely imperative. The security and integrity of the information flowing through energy information networks is of great importance. Computer security breaches unfortunately do happen caused as a result of error, misuse of IT resources, or by malicious and nefarious users who may or may not be authorized.



Offshore energy transportation and delivery platforms use distributed information systems to manage the operation and installation of these facilities



Shalom ESX: UX manages and secures the entire cloud IT and network over the cloud from a secure management interface

- Cloud Anomaly Detection and Authentication
- Cloud and Application Analytics
- Extensible Cloud Security Platform

**Nowell Development ::**

Nowell Development is a software team that focuses on reducing the financial and operational security risks of companies who rely on information technology systems and software for the operation of their businesses. Nowell Development uses advanced security and risk analytics cloud software that is able to identify parts of the IT information network that are experiencing high-risk situations that could result in loss, damage, or abuse of information. Nowell's software is particularly suitable for companies who are looking to migrate some or part of their IT to the cloud. Shalom ESX Platform software is able to identify and reduce risks by revealing anomalous/suspicious behavior of users, networks, applications, cloud objects, identity objects, and systems; and authenticating/validating high risk situations in order to reduce the possibility of information security breach or risk;

Nowell's software can also be used to optimize and measure IT resource usage by users. The Shalom ESX software package is able to analyze and

intelligently predict the frequency usage of applications, cloud objects, computers, users, and using this data IT managers can determine how their IT resources are being used in the field. With this data, managers can better measure how their users are making use of their IT resources; enabling better decision-making and more efficient use while allocating financial resources to the most important producing areas; pulling away investments from unproductive systems that cost too much and are not being used.

Shalom ESX software package is very suitable for cloud information environments, giving a business-intelligent analysis on the risk state of the entire energy information enterprise, while reducing losses and optimizing the bottom line. Now that sounds like a **winning strategy**



## About Nowell Development

Nowell Development: Cloud Software Company weaving integrity, security and business transaction analytics in a simple-to-use hosted software delivery platform. Shalom ESX Platform secures and authenticates suspicious, high risk behavior transactions of trusted identity objects. Nowell licenses server framework for app development in hosted intelligent communications applications. Official IBM Business Partner; <http://www.nowellgroup.com>

## Contact Us Today:

Nowell Development, Inc  
11152 Westheimer Road # 956  
Houston, Texas 77042  
United States of America  
Web: <http://www.nowellgroup.com>  
E-mail: [support@nowellgroup.com](mailto:support@nowellgroup.com)  
<http://linkedin.com/company/nowell-inc>

*"... for He is good; his love endures forever"*